

Install OPOS Driver

This section is dedicated to guiding you through the setup process of OPOS Driver Kit.

Installing Epson OPOS 2.5 and Service Pack 9

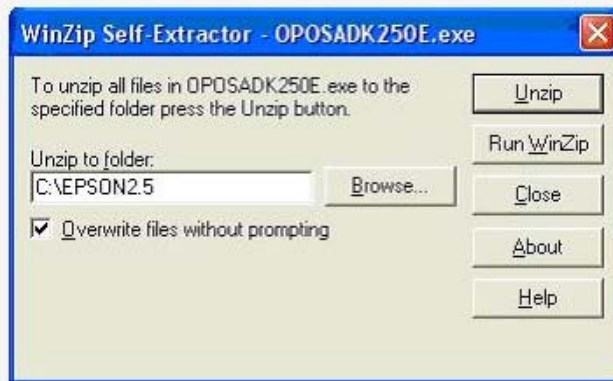
1. OPOS Version 2.5 [Download](#) -14 MB
2. Click "Run"



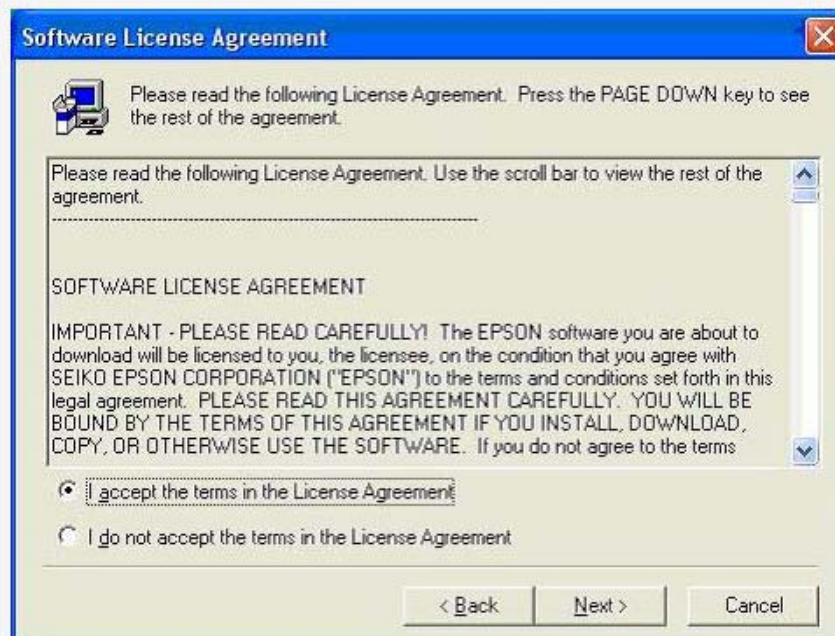
3. Click "Run"



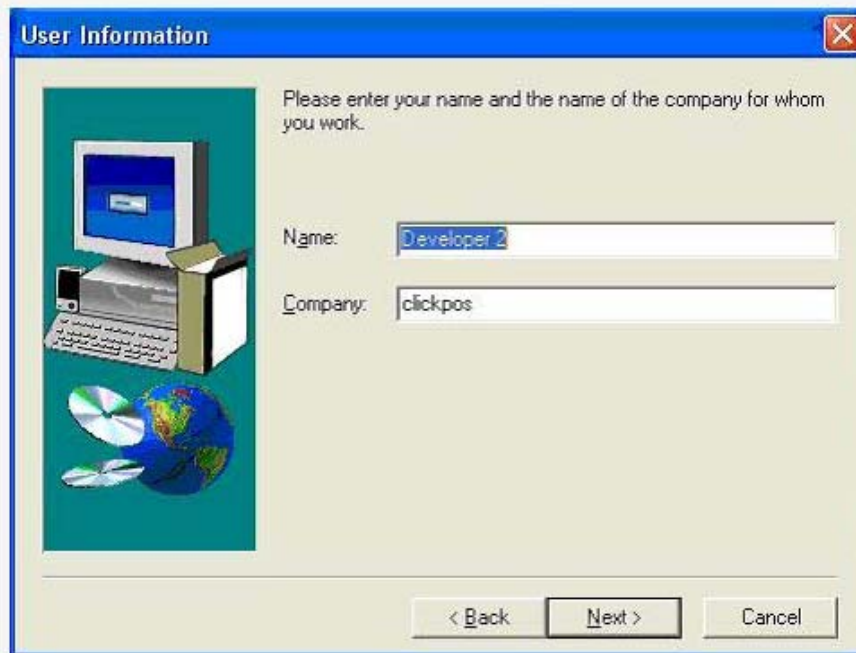
4. Unzip to "C:\EPSON2.5"



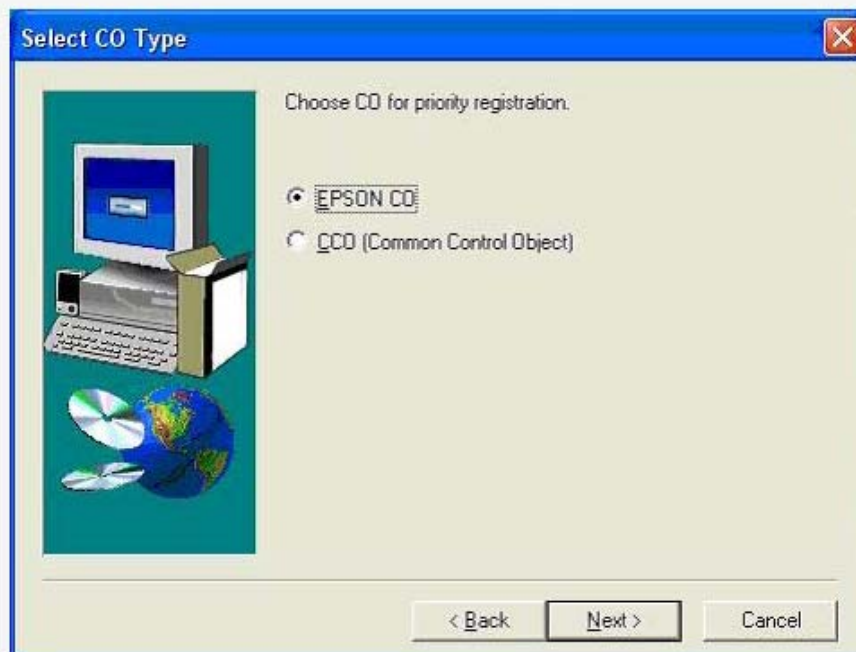
5. Open "My Computer"
6. Browse to "C:\EPSON2.5\OPOSADK\W250\disk1"
7. Click **SETUP.EXE**
8. Click Next
9. Click I accept then next, then click yes when asked if you really accept



10. Click Next
11. Type your Name and Company Name, then Click Next



12. Click Next Leave Default Destination,
13. Click Next Leave just program files selected,
14. Leave EPSON CO selected then click next



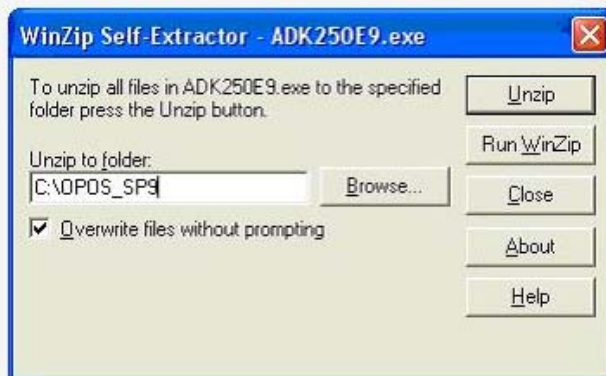
15. Click Next (Leave Default Option of Full Install)
16. Click Next leave default start menu setting
17. Click Next then wait for files to copy
18. Unselect View Release Notes and click Finish

Install OPOS Service Pack 9

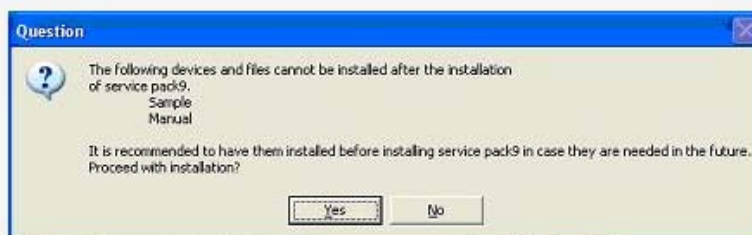
1. OPOS Service Pack 9 [Download](#) -9 MB
2. Click "Run"



3. Click "Run"
4. Unzip to OPOS_SP9

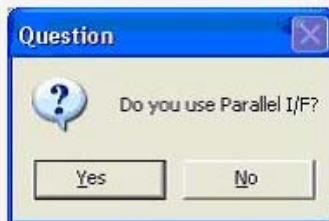


5. Browse to **C:\OPOS_SP9\OPOSADK\250e\SP9\disk1**
6. Press Yes if prompted with the below window





7. Follow the same procedure for installing the OPOS 2.5 drivers, select I agree to the licence agreement and then click next until prompted with the following screen
8. Click YES when if asks "Do you use Parallel I/F"



9. If you are asked to install Tm-88 or cash drawer drivers select YES